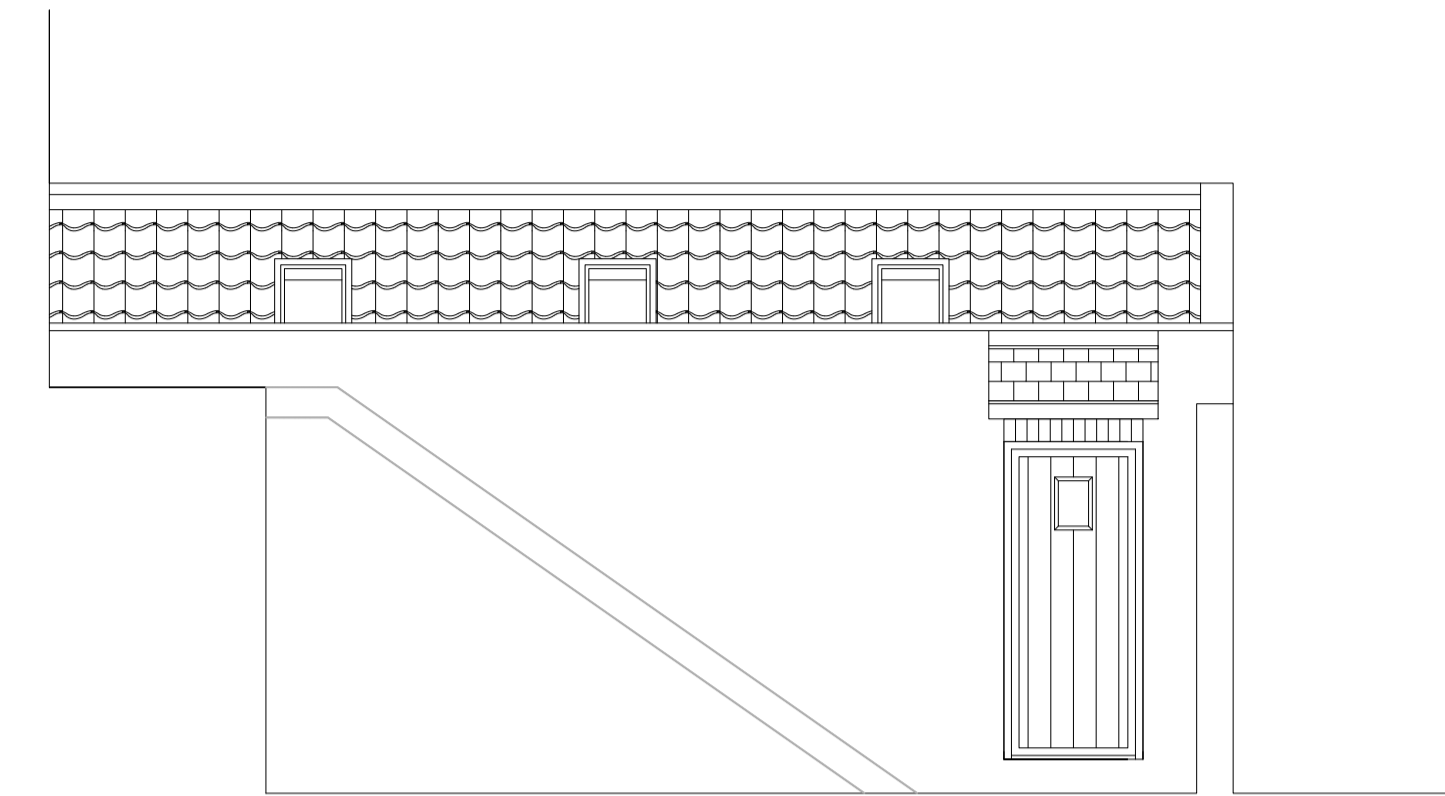


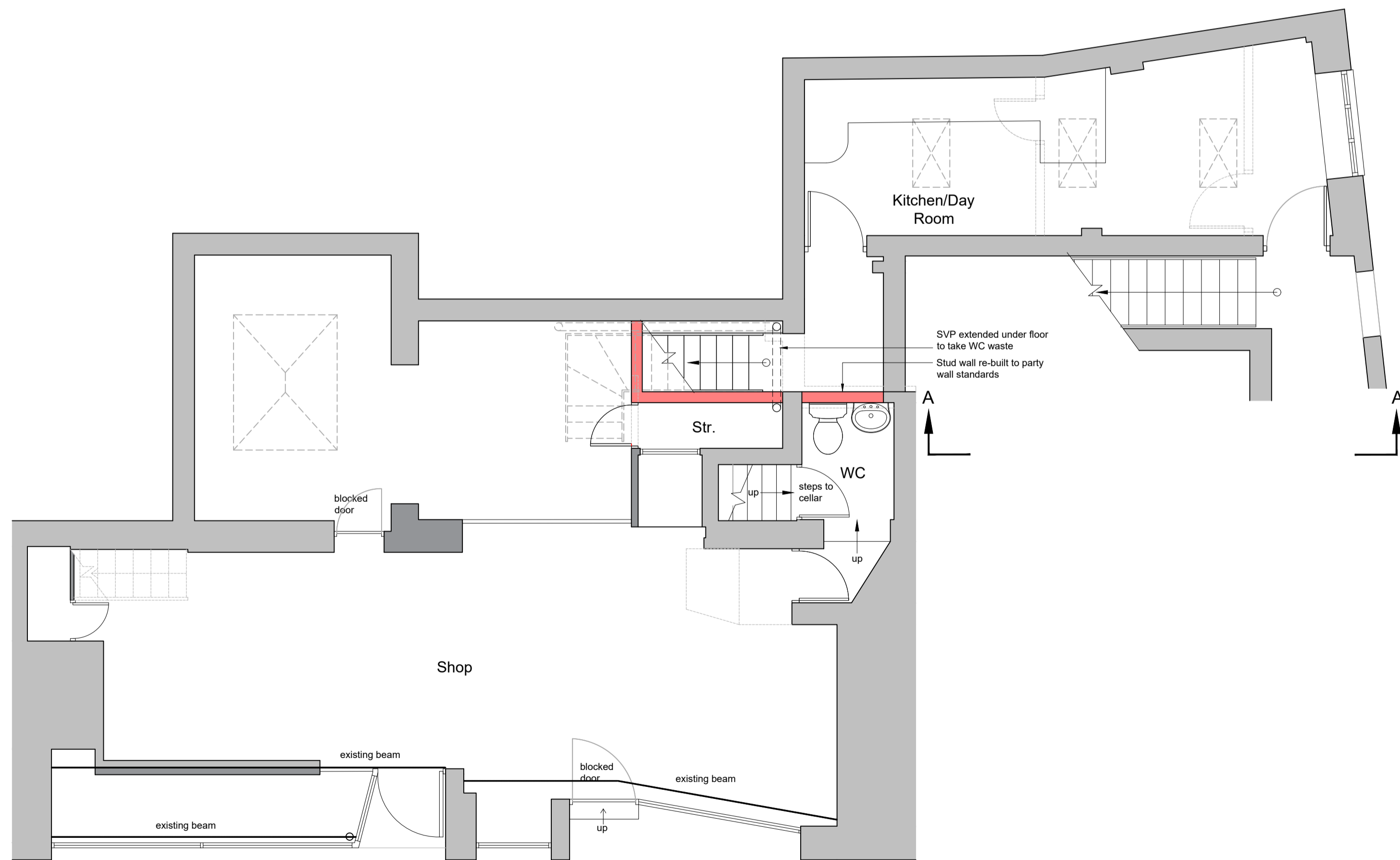
© This drawing and design are copyright.
 Do not scale from this drawing. Use only figured dimensions. If in doubt, ask.
 All dimensions are to be checked on site.
 Any discrepancies should be reported immediately to the Architect.



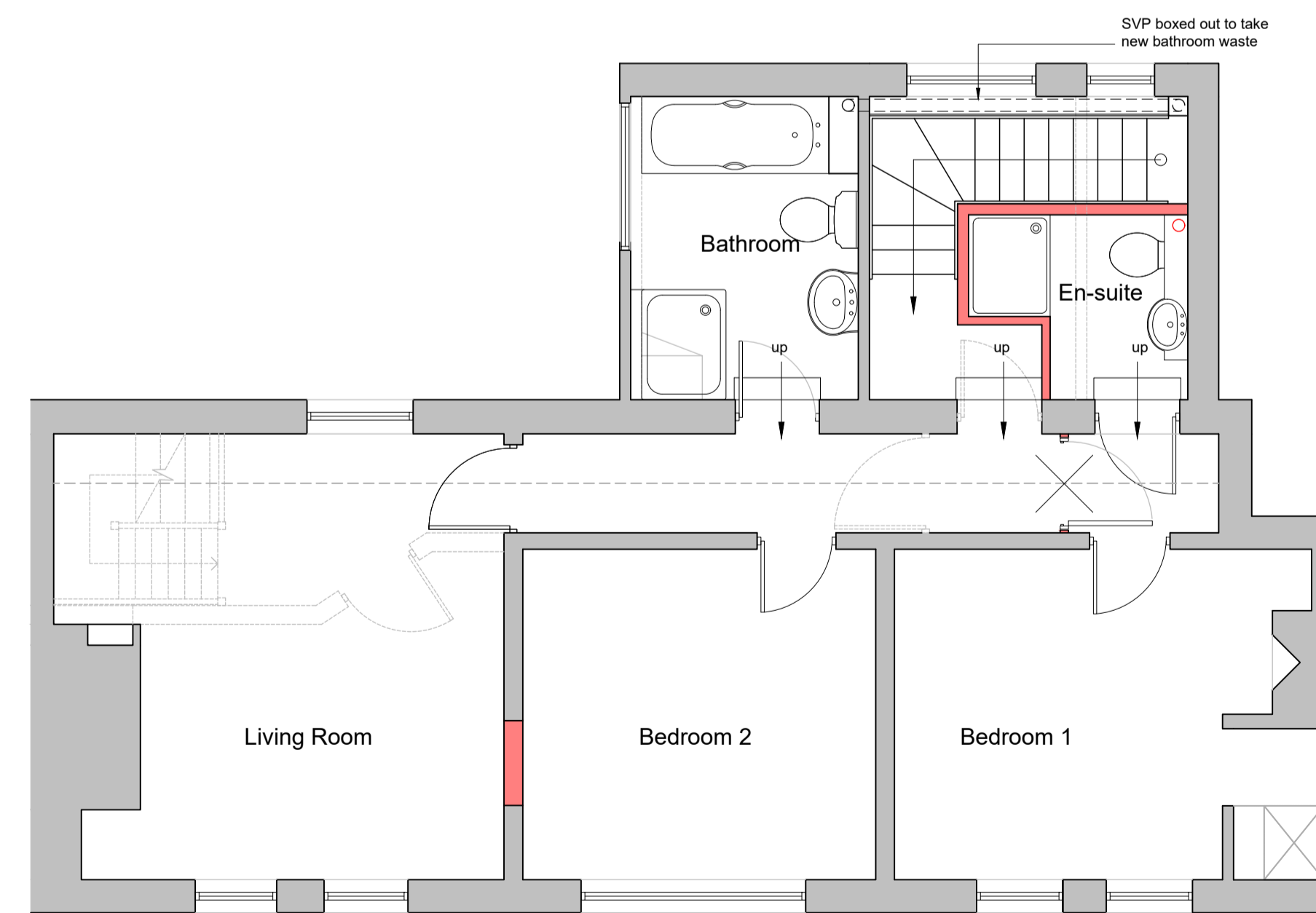
Front elevation



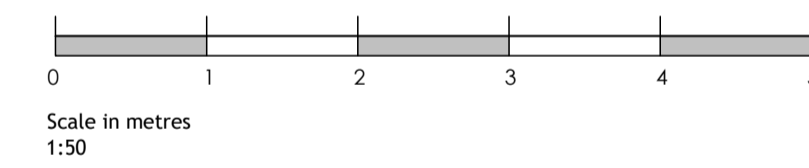
Elevation A-A



Ground floor plan



First floor plan



DATE	REV	DESCRIPTION	DRAWN
05.01.21	B	Amended to comments	AP
17.12.20	A	Updated plans to comments received	AJC

PatrickAllen&Associates Architects
 architects@patrickallen.org.uk 2 Grange Business Centre
 www.patrickallen.org.uk Tommy Flowers Drive
 +44 (0)1473 620660 Grange Farm
 Kesgrave, Ipswich
 Suffolk, IP5 2BY

Project
 1B Thoroughfare
 Woodbridge
 Suffolk, IP12 1AA

Client
 Robin D'Arcy

Drawing Title
 Proposed plans

Drawing Status
 Preliminary

Scale	Paper Size	Date	Drawn
1:50	A1	July 2019	NM

Drawing Number	Drawing Rev
4060-07	B

© 2018 Patrick Allen & Associates Limited | Registered No: 4694261